

Child seats - know the rules

DID YOU KNOW:

As of 1 April 2008 your child seats/boosters must comply with modern European standards – UN ECE 44.03 standard (or subsequent versions eg 44.04) - so check NOW!

Failure to have the required seat could result in a fine or injury to a child in the event of an accident.

A REMINDER OF THE REST OF THE RULES:

Children under three years of age may not be carried in vehicles that are not fitted with seat belts. Children under 3 years MUST use the child restraint appropriate for their weight in all vehicles' (including vans and other goods vehicles).

Children aged three and above (and less than 150 centimeters tall) up to 12 years must be carried on the rear seat using the appropriate child seat or booster. This rule does not apply to motor coaches and buses.

EXCEPTIONS:

Children aged three and over may be restrained on rear seats using seat belts only (i.e. not using child restraint systems) if there is no room to fit a third child restraint system because other children are being restrained using child restraint

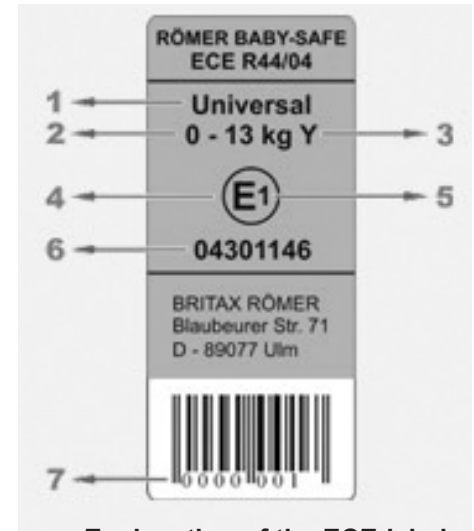
systems; whilst legal it is still clearly dangerous and not recommended. In addition if no child seat is available in a taxi then the fitted seatbelt should be used.

Common faults

Belts not fastened - Children often undo seat belts either accidentally or deliberately. It is important to check the seat is correctly fastened before each journey.

Buckle crunching - This is where the seat belt buckle is in contact with the seat frame causing the buckle to pull in the wrong direction. It may cause the buckle to fail in the event of an accident. The only way to prevent this is to try the seat in the vehicle before you buy.

Straps too loose - The straps in a child seat should be adjusted to secure the child firmly into the seat. You should be able to slide a couple of fingers between the child and the belt. Correctly adjust the straps every time the child is placed in the seat.



Explanation of the ECE-label

- 1 shows for which category the child seat has been approved
- 2 approved for weight
- 3 "Y" shows that this child seat has a 5-point harness system with crotch strap
- 4 European Approval indicator
- 5 indication for country in which the approval was obtained (1=Germany, 2=France, 3=Italy, 4=the Netherlands etc.)
- 6 Approval number. The first two numbers show to which version ECE R 44 the child seat has been approved (in this case ECE R 44/04)
- 7 current number